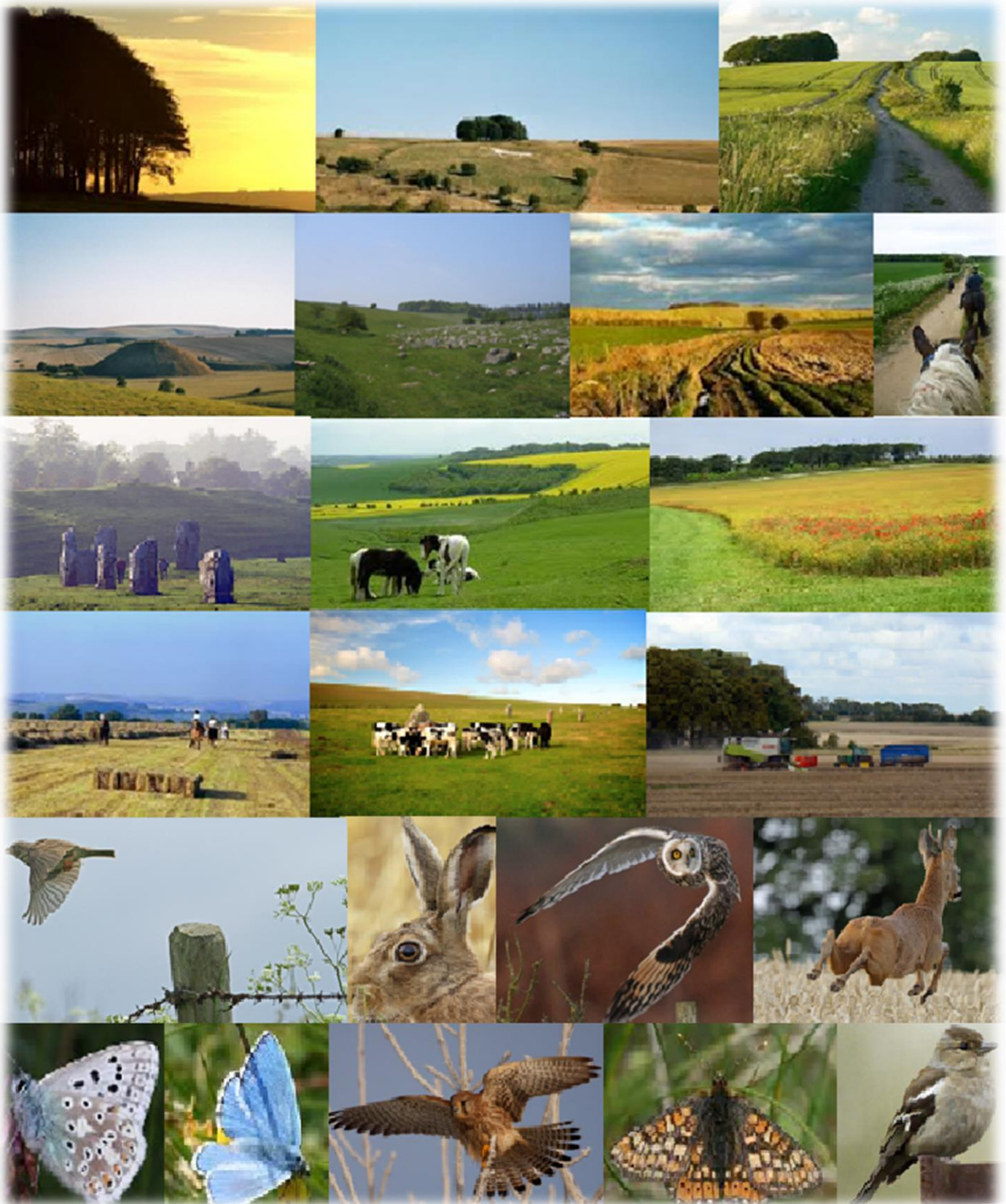
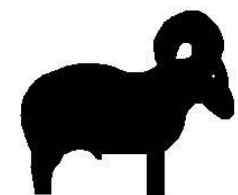


The Marlborough Downs: Space for Nature



Twelfth Annual Report



Dr Jemma Batten
Marlborough Downs Space for Nature Project Manager
Arnolds Hill Farm Cottage
Arnolds Hill – Wingfield – Trowbridge – Wiltshire BA14 9LD

☎ 07855 506112

✉ jemma.batten@blacksheepcountryside.co.uk



**The Marlborough Downs
Nature Enhancement Farming Ltd**
(A company limited by guarantee)

Report and Unaudited Financial Statements
for the year to 31st March 2024

Company Number: 7907437
Registered Charity Number: 1147925

The Marlborough Downs Nature Enhancement Farming Ltd.

(A company limited by guarantee)

The trustee board presents its directors' report and unaudited financial statements for year to 31 March 2024.

ADMINISTRATIVE DETAILS OF THE CHARITY, ITS TRUSTEES AND ADVISERS

Company Registered No: 7907437

Charity Registered No: 1147925

Principal Address: Arnolds Hill Farm Cottage, Arnolds Hill, Wingfield, Trowbridge, Wiltshire BA14 9LD

Registered address: Arnolds Hill Farm Cottage, Arnolds Hill, Wingfield, Trowbridge, Wiltshire BA14 9LD

Trustees that served during the period:

- Christopher Musgrave – Chair
- Marcus Robert Cooper
- Robin Butler
- Gillian Carter
- Peter Lawson
- Victoria Lowes
- Piers Maynard
- Matthew Moore

Project Management: Black Sheep Countryside Management – Lead Dr Jemma Batten

Independent Examiner

Not required as income was less than £25,000

Bank

Barclays Bath Branch, 4-5 Southgate Street, Bath BA1 1AQ

The Marlborough Downs Nature Enhancement Farming Ltd.

(A company limited by guarantee)

REPORT OF THE TRUSTEE BOARD

1. Chairman's Introduction

For anyone who only knows about farming through the press, it may be difficult to understand the benefit that farmers can and are bringing about for the environment and what the potential value of this is to other people - especially when health & wellbeing are uppermost in a lot of people's minds. Once again, we've promoted farming, conservation, and rural priorities through our very successful public events programme and are grateful to the North Wessex Downs Farming in Protected Landscapes fund for providing us with the resources for this for another year. We could not have done it without the tireless commitment of Janinka Diverio, whose imagination, resourcefulness and dedication made the programme such a hit. Janinka has now moved on, but we hope to maintain ties with her and who knows, maybe work together again in the future.

Once again, one of the highlights of the year was Open Farm Sunday, which in 2023 was held at the Space for Nature Reserve on Maisey Farm, hosted by farmer member Jilly Carter. We saw over 500 visitors on the day, who enjoyed meeting the animals, exploring machinery, finding out about farm habitats, learning about metal detecting and the history it unearths, and, of course, taking a tractor ride!

Within the group, we've benefited from continuing support from the project team on all things environmental, from advice on delivering elements of our Stewardship agreements to learning from one another on farm walks. We've also embraced the concepts of regenerative farming, having hosted a full day workshop on soil health, and shared details of many other events via our valued WhatsApp chat.

The most significant thing that has happened this year though has been the reignition of our enthusiasm for the concept of working together to deliver for the environment. After virtually shutting down through covid lockdowns the group struggled to regain momentum, to the extent that the board questioned the validity of continuing. However, when put to the members, we found that there remains overwhelming support, and consequently in the second half of the year our project manager has worked with members to review the structure and governance of the organisation as well as the purpose of the group and future priorities. We look forward to becoming a Charitable Incorporated Organisation in 2024, and kicking off a new programme of activities once this happens.

All of this could not have happened without the tireless support and encouragement of our group's Director – Dr Jemma Batten. She has been at the forefront of everything that has taken place throughout the year and without her we would not have the drive, nor the ambition, that still burns firmly within the collective group – thank you Jemma, and here's to many more successful years ahead.

Chris Musgrave
Chair

2. Structure, governance and management

Governing Document

The organisation is a charitable company limited by guarantee, incorporated on 12 January 2012 in preparation for the potential success of a bid application submitted to Natural England, which was then awarded in March 2012, and registered as a charity on 3 July 2012. The company was established as 'The Marlborough Downs NIA' under a standard Memorandum of Association which established the objects and powers of the charitable company and is governed under its Articles of Association. In the event of the company being wound up members are required to contribute an amount not exceeding £10. On 16th December 2015 the Charitable Company was renamed as 'The Marlborough Downs Nature Enhancement Farming'.

Organisational Structure

The Marlborough Downs Nature Enhancement Farming charity has a board made up of farming and non-farming trustees and invited associates. Chris Musgrave is the chair of the charity board. The board delegates operational activities to two delivery groups: the Biodiversity and Landscape Group and the Community Outreach Group.

Projects are a collaboration between the farmers of the Marlborough Downs (who are members of the Marlborough Downs Nature Enhancement Farming charity), Black Sheep Countryside Management (responsible for project delivery), and various other stakeholders. Board meetings are run as project board meetings and for this purpose representatives from non-farming members and partner organisations have been co-opted to the board. They are:

- Victoria Lowes, Piers Maynard and Christopher Musgrave, Associate Member representatives
- Jemma Batten, Senior Consultant, Black Sheep Countryside Management

Other key stakeholders may be invited to attend board meetings from time to time. All strategic decisions are taken at these properly constituted project board meetings. All agenda items are supported by board papers, which include a risk analysis and clear recommendations to be discussed and considered. The decisions are clearly minuted and these minutes with actions are circulated and made available to all members via the website.

Recruitment & Training

This is the twelfth year of the charity, and this report covers the year ended 31st March 2024. The charity continues with the same overall aim as in previous years. All but one of the trustees are currently or have previously been farmers and represent the farming community in the Marlborough Downs area. Some have been on the board from the start of the charity and others have joined since. At the 2018 AGM it was agreed that non-farmer associate members should also be allowed to vote and to stand as trustees as long as the majority of the board remains as farmer members. No new trustees were appointed in the year to 31st March 2024.

The skills of the project board and their advisers are considered to be appropriate for the requirements of the charity's objectives and have been able to meet the project targets over the year. Trustees are offered training to fill any further gaps identified and if required additional trustees with new skills would be recruited.

3. Financial Review

The majority of this year's income was derived from a Farming in Protected Landscapes grant for community events and outreach activities. Additional income has been generated through

- Fundraising events including Open Farm Sunday
- One-off donations

Activities	Income	Spend	Under/over-spend
Community	£17,650	£15,025	£2,624
Landscape	-	£18,392	(£18,392)
Overheads	£4,787	£7,097	(£2,310)
Total	£22,436	£40,515	(£18,078)

Please note: All figures are rounded to the nearest £1. Numbers in brackets are negative, i.e. overspend.

£39,577 of restricted funding was brought forward (Landscape).

Reserves Policy

The policy on reserves is accepted as being minimal as offices are virtual and all work is undertaken by volunteers or contractors. Generally, a reserve of £4,000 for unforeseen events is considered adequate as this could cover half a year's management costs in an emergency. As of 31 March 2024, we had £2,296 unrestricted funds in reserve which is not considered adequate, hence the decision to introduce an annual membership subscription.

Donations In Kind

In addition to the actual management of the budget, the charity benefits from items and services donated as 'in kind'. As in previous years, much of this has been in the form of pro bono staff time to support the project, donated items including plants and plant protection, habitat management activities, and free venue and facility use. Volunteer time accounted for a high proportion of activities undertaken including project management time. However, the majority of this was not recorded due to the lack of reporting and paid support time to record and collate.

4. Funds held as custodian trustee on behalf of others

The trustees act as custodians and ultimately the controlling group of the funds held. This was limited during the year as explained above. Otherwise, no funds are held on behalf of others.

5. Public benefit statement

The Marlborough Downs Nature Enhancement Farmers Ltd and Charity aims to deliver a more biodiverse, more attractive and more accessible landscape. Alongside these obvious, tangible benefits come a suite of gains that may be more difficult to quantify but are known collectively as ecosystem services. Such gains include improved water quality due to reduced agricultural inputs; a contribution towards the physical and mental health of residents and visitors through access to green spaces and fresh air; mitigation against climate change through building robust ecological networks; better crop pollination; support for a strong rural economy via agriculture, tourism and recreation; and the social, cultural and educational benefits that are a result of interaction with nature.

The partnership is driven by the fact that despite decades of conservation effort, many of our habitats and species are at best stable and at worst in decline and while most of the farmers in the area have long been involved in environmental schemes, we have shown that the farmer-led, bottom-up approach of this initiative can lead to far greater and more wide-reaching benefits as a result of the 'ownership' conferred on us by this project. We have also demonstrated that the longevity of this project exceeds that of others that rely upon financial incentives rather than personal commitment. We understand that a landscape-scale approach cannot succeed without widespread farmer involvement, and we have ensured that all farmers in the area had the opportunity to contribute to the development of the project, and this year have agreed to extend the project boundary to cover farms that were previously excluded.

As well as environmental and conservation benefits there is an emphasis on education of the public through volunteer opportunities to support the project as well as direct educational activities provided by the project. These activities are community based and work with existing groups so also

promote community working and cohesion as groups and individuals are brought together with a common aim. We work with local communities to encourage more involvement in the countryside and to promote greater awareness of landscape, wildlife and farming. We are keen to enthuse people about the countryside and get the non-farming community involved with activities on and about the Downs through events and activities, workshops and work parties. We work to provide better public access and information to encourage people to enjoy and understand the landscape while improving their health and wellbeing.

6. Objectives and activities

The objectives as laid out for the Company in the initial incorporation document were:

- To promote for the benefit of the public the conservation, protection and improvement of the physical and natural environment.
- To advance the education of the public in the conservation, protection and improvement of the environment.
- To promote sustainable development for the benefit of the public by the preservation, conservation and the protection of the environment and the prudent use of resources.
- The promotion of sustainable means of achieving economic growth and regeneration.

7. Achievements and performance Year 12 (April 2023 to March 2024)

Month	Meetings		Date and event	Venue (and number attending)
	Board	Delivery Group		
Apr	✓	COG	6 th Nests and Clay Eggs	SfN Reserve (23)
			13 th Wildlife Food Chains	Manor Farm, Berwick Bassett (21)
			24 th Foraging with Fred	East Farm (13)
			30 th Bee Senses	Weir Farm (11)
May			14 th Dawn Chorus Walk	Manor Farm, Berwick Basset & Avebury (20)
			20 th Nuffield Scholars	Weir Farm (25)
			21 st Ponds and Worms	Weir Farm (11)
Jun			11 th Open Farm Sunday	SfN Reserve (450 est.)
			20 th Arval Volunteers	Weir Farm (17)
			20 th CLA Farm Walk	Maisey Farm (8)
			23 rd Summer Farm Walk	South Farm (17)
Jul		COG	8 th Sketchbook Nature Walk	SfN Reserve (6)
Aug	✓		8 th Design a Nature Trail	Barbury Castle Estate (27)
			15 th Pond Exploring	Fiddlers Hill (13)
			22 nd Transient Art	SfN Reserve (21)
Sep	✓		8 th Bat Walk	Avebury (27)
			19 th Soils Workshop	South Farm (16)
Oct			16 th Night Safari	East Farm (4)
			18 th Night Safari	Manor Farm, Avebury Trusloe (4)
			20 th Night Safari	Maisey Farm (4)
			24 th Hibernation & Migration	SfN Reserve (21)
Nov			2 nd AGM	SfN Reserve (24)
			18 th Willow Wreath Making	Broad Hinton Village Hall (22)
			11 th Volunteer Scrub Planting	Various (25)
Dec			16 th Volunteer Scrub Planting	Various (15)
			10 th MDSfN Review	Broad Hinton Village Hall (24)
Mar			16 th Saturday Farm Walk	SfN Reserve (15)

COG = Community and Outreach Group

More details can be found under the relevant objective headings that follow.

OBJECTIVE 1 – To deliver evidence-based conservation activities on a landscape scale

1.1 Biodiversity tailoring

The Project Director continues to advise members on environmental delivery within the context of what's happening beyond individual farm boundaries, which enables us to deliver on a landscape scale.

1.1.1 Stewardship agreements

The majority of members are in one or more of the following schemes:

- Environmental Stewardship
- Countryside Stewardship
- Sustainable Farming Incentive

1.1.3 Dissemination of best practice

In June, members were invited to a farm walk at South Farm to learn about how members Gary and Sarah McMurray are delivering habitat for farmland birds and invertebrates in the form of:

- A crop that will be left unharvested specifically to provide winter seed for farmland birds
- A legume fallow mix that is full of nectar-producing flowers, and also draws nitrogen down into the soil
- A cereal crop grown without chemicals
- A plot full of wildflowers

We also learnt how converting arable land to unfertilised grassland is helping to reduce diffuse pollution and flooding.

In September, members attended a full day workshop led by soils expert Niels to discover how regenerative agriculture practices can help to weatherproof our farms. Good soil structure and biology is the key to protecting crops and grasslands against both flood and drought, and everyone went away keen to put some of the learning into practice.

We also hosted two groups – one of Nuffield scholars and one of the local Country Land and Business Association team leaders – to share our experiences of delivering nature conservation and land management good practice at a landscape scale.

1.2 Supporting local conservation businesses

We continue to have excellent relationships with many local businesses and other organisations involved in farming, conservation, land management, and other countryside activities, and communicate and collaborate on an *ad hoc* basis.

OBJECTIVE 2 – To enable appropriate management of semi-natural wildlife habitat

2.1 Wildlife corridors and stepping stones

2.1.1 On-farm delivery

With over three-quarters of the land covered by the Space for Nature project in some kind of Stewardship agreement, it's not surprising that there's an immense amount going on across the Downs in terms of environmental activities. The focus is very much on providing habitat and foraging sites for wildlife, with grassland and hedgerow management, along with the provision of rough grass margins, plots of seed-bearing crops for farmland birds, and areas nectar-rich plants for invertebrates being most popular.

2.1.2 Space for Nature Reserve

We continue to make good use of the SfN Reserve where a whole range of features are in place, including

- Species-rich grassland
- Tree sparrow village
- Woodland and scrub
- Hedges
- Fruit trees
- Wildlife pond
- Chalk pit
- Bug hotel, bird, bat and invertebrate boxes
- Stumpery and log piles
- Wild bird mix
- Nectar mix
- Fallow plots
- Arable crops
- Tussocky grass margins

We have held several events at the Reserve throughout the year, including visits from Nuffield Scholars and the CLA during which the close proximity of the various habitats and structures allowed us to demonstrate our work.

We also held our 2023 Open Farm Sunday event at the Reserve.

2.1.3 Scrub planting

In December, we co-ordinated around 40 volunteers to plant pockets of scrub on ten farms belonging to members. The species planted were selected to provide food in the form of flowers (pollen and nectar), fruit, berries and nuts for a range of wildlife. As the stands mature, they will also become valuable for nesting, shelter and/or songposts in our very open landscape.

OBJECTIVE 3 – To consolidate populations of species of national and local importance

3.1 Space for Birds: Marlborough Downs farmland bird project

Our volunteer farmland bird adviser, Matt Prior, of Wiltshire Ornithological Society, continues to coordinate our three-pronged approach to farmland bird conservation:

1. Year-round feeding opportunities for adults and spring/summer insect food for chicks
2. Nesting habitat
3. Protection from predators where predation significantly threatens breeding success

3.1.1 Feeding and foraging habitat

As in previous years, most of our members continue to provide overwinter stubbles and/or cover crops, sown wild bird mixes and/or nectar mix plots via Stewardship agreements, and/or on a voluntary basis.

3.1.2 Supplementary feeding

Members continue to feed over 20 tonnes of seed annually to our farmland birds over winter, either scattered on the ground or through giant bird feeders purchased by the charity at a reduced rate.

3.1.3 Farmland bird events

We have hosted a Dawn Chorus Walk and three nighttime safaris with an infrared camera, led by Matt Prior. These events were attended by both MDNEP farmers and members of the public.

3.2 Widespread species

As always, our autumn Bat Walk was very well attended, and everyone learnt a lot about managing habitat for the various species.

We continue to manage ponds and tree sparrow villages to provide wildlife habitat across the Downs, and the scrubby areas created during our planting campaign in December will in time support many different species.

OBJECTIVE 4 – To offer a range of opportunities for people to engage with the landscape of the Marlborough Downs

OBJECTIVE 5 – To provide high quality access for all

OBJECTIVE 6 – To increase local and national awareness of the work, achievements and impact of the Space for Nature Project

4.1 Marlborough Downs SfN events

4.1.1 Public events

Our events co-ordinator, Janinka Diverio, curated and executed our exciting and broad programme of events highlighting nature, farming, wellness and the arts whilst making Space for Nature. The programme was again very successful and well-supported by the local community – full details at Annex 1.

In addition to public and special interest events, the programme has delivered three volunteer workshops, one with Arval Car Leasing staff and the other our scrub planting campaign already mentioned above. Member Jilly Carter has also hosted visits to the Space for Nature Reserve by residents of a local care home.

4.1.2 Space for Nature WILD

Our monthly forest school offers themed morning sessions at Weir Farm and has covered a whole range of activities aimed at children aged six years and over. Topics have included composting, autumn, PoeTREE, and bugs.

4.2 Outreach

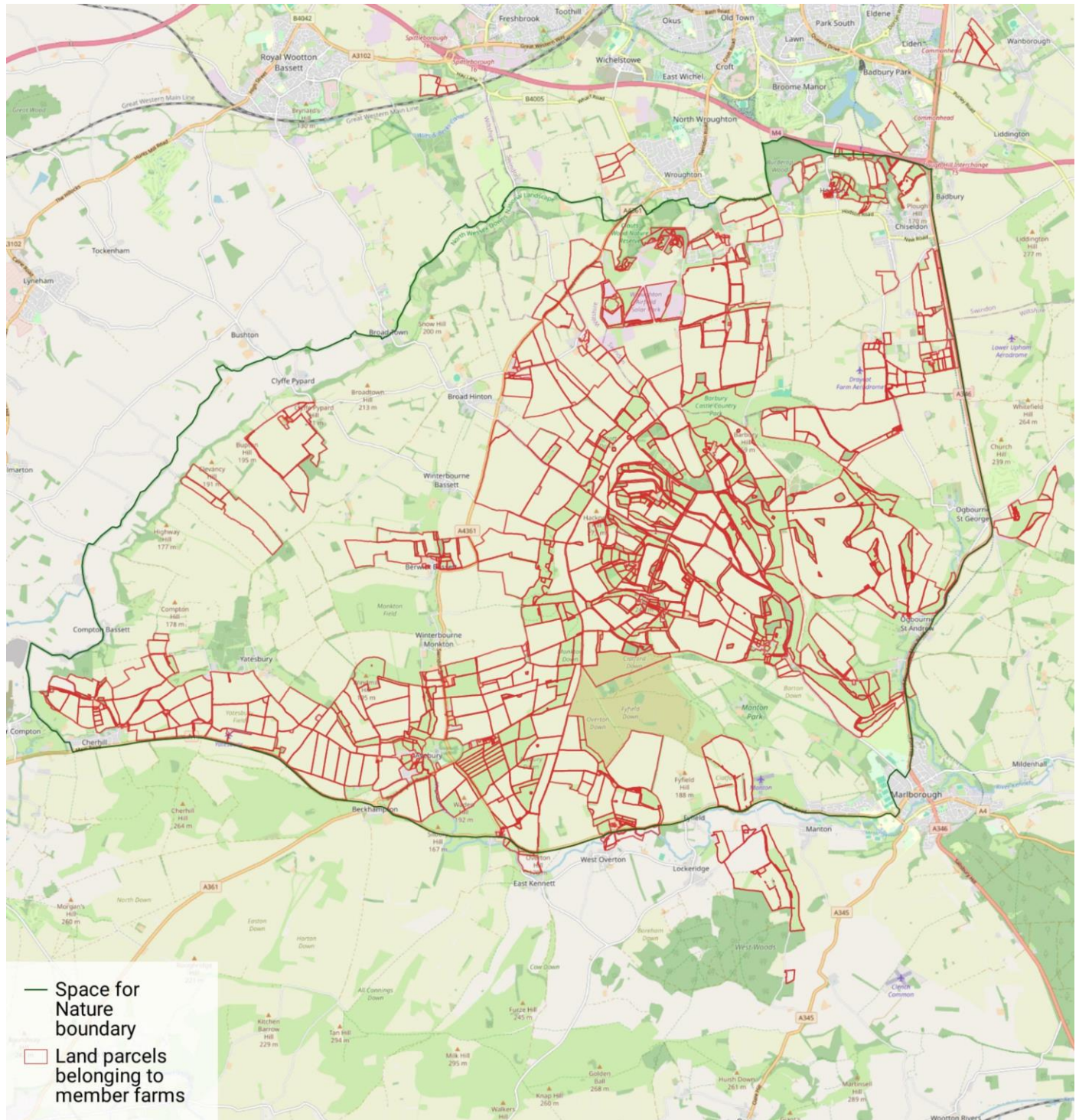
Janinka continued to be very active on our behalf on social media, and we now have almost 4,000 followers on Facebook and 1,000 on Instagram. Group members David White and Angela Norman also post beautiful photos of the landscape and wildlife of the Downs, with informative posts that are very well received by our followers.

Unfortunately, at the end of 2023 personal circumstances meant that Janinka had to resign as our event co-ordinator. She is much missed, but as the programme only had a couple of months' worth of funding left, we took the decision not to replace her, and delivered the last few events ourselves.

8. Progress Planned for future Years

Between November 2023 and January 2024, a full review of the future of the partnership and project was undertaken.

It was agreed to extend the project boundary to the west, to align it with the boundary of the North Wessex Downs Area of Outstanding Natural Beauty, and to recruit farmers in this area as new members.



This will also allow some farmers who were previously associate members to become full members.

8.1 Organisational structure

At the AGM on 2nd November 2023, it was agreed that we should change our organisational structure to something more appropriate which, it turns out, is a Charitable Incorporated Organisation (Association Model). The CIO is a new legal form for a charity crafted in response to requests from charities for a new structure which provides some of the benefits of being a company but with a reduced administrative burden. The Association Model allows members who are not trustees to vote and is thus the most appropriate for our purposes. It is intended that we apply to the Charity Commission to convert from a charitable company to a CIO in 2024.

8.2 Governance

Converting to a CIO will require that we review and update our Constitution. At that point we will re-elect the board of Trustees and invite all farmers within the new boundary to become a member of the new organisation.

8.3 Project aims and objectives

In January, members came together to review and update our project aims and objectives. We identified new goals and aspirations as shown overleaf and in Annex 2. Once the conversion to CIO is completed, the project team will use these goals and aspirations to prepare a new three-year project plan to identify activities and apply for funding.

8.4 Day-to-day project management

It was agreed that we should continue with the current organisational structure, i.e. a board of Trustees with a strategic overview, delivery groups to develop ideas for activities, and a project management team to facilitate.

Black Sheep will continue to manage the project on behalf of the members.

8.5 Funding

It is anticipated that Black Sheep will apply for grant funding to deliver specific projects but recognised that funding for overheads is difficult to achieve and so an annual membership fee will be charged to cover this and to bolster our reserves.

2024-2027

Aspirations and Goals




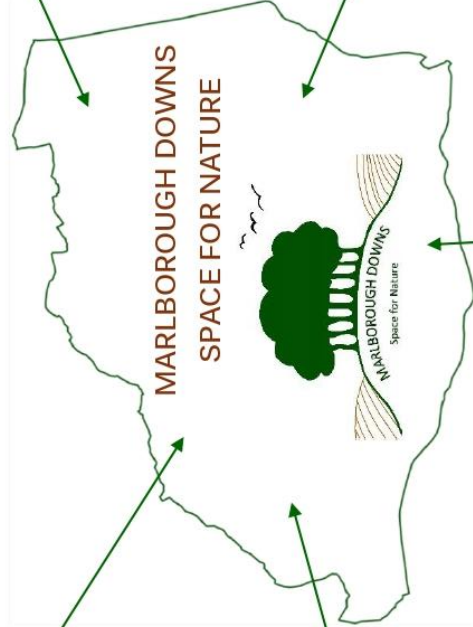
Environmental planning & delivery

- Baseline surveys and opportunities mapping
- Small actions, big scale



Representation & advocacy

- Better use of social media
- Share achievements
- Case studies



Links with other groups

- Field trips to landscape projects
- Invite other groups to visit
- Mutual learning



Community & Outreach

- Varied events programme
- Build public support
- Focus on schools



Partnership Working

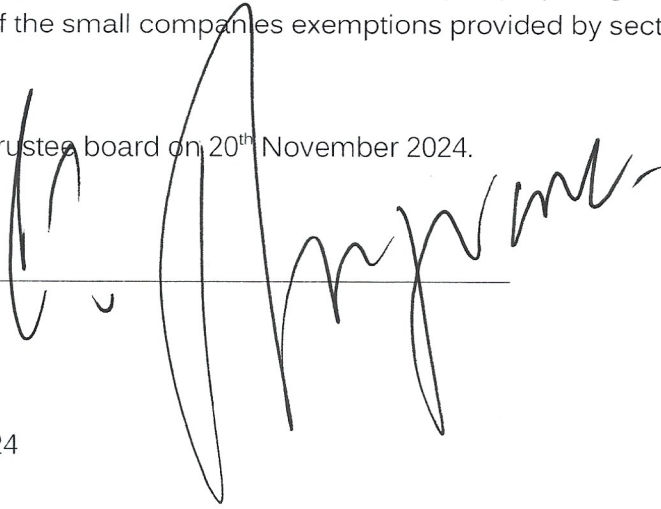
- Shared resources
- Advice and funding
- Joint projects

Board Statement

This report has been prepared in accordance with the Statement of Recommended Practice: Accounting and Reporting by Charities (issued March 2005). In preparing this report, the Trustees have taken advantage of the small companies exemptions provided by section 419 (2) of the Companies Act 2006.

It was approved by the trustee board on 20th November 2024.

Signed: _____

A large, stylized handwritten signature in black ink, written over a horizontal line. The signature is cursive and appears to read 'Christopher Musgrave'.

Christopher Musgrave
Chair

Date: 20th November 2024

**THE MARLBOROUGH DOWNS NATURE ENHANCEMENT
FARMING LIMITED**

**STATEMENT OF FINANCIAL ACTIVITIES
INCLUDING INCOME AND EXPENDITURE ACCOUNT
*FOR THE YEAR ENDED 31 MARCH 2024***

	Notes	Unrestricted funds 2024 £	Restricted funds 2024 £	Total 2024 £	Total 2023 £
<u>Income from:</u>					
Donations and legacies	3	5,732	13,458	19,190	20,313
Charitable activities	4	3,246	0	3,246	5,364
Total income		8,979	13,458	22,436	25,677
<u>Expenditure on:</u>					
Raising funds	5	-	-	-	605
Charitable activities	6	8,739	31,775	40,514	32,813
Total resources expended		8,739	31,775	40,514	33,419
Net income/expenditure for the year/ Net movement in funds		239	(18,317)	(18,078)	(7,742)
Fund balances at 1 April		2,057	39,577	41,634	49,376
Fund balances at 31 March		2,296	21,260	23,556	41,634

The statement of financial activities includes all gains and losses recognised in the year.

All income and expenditure derive from continuing activities.

The statement of financial activities also complies with the requirements for an income and expenditure account under the Companies Act 2006.

THE MARLBOROUGH DOWNS NATURE ENHANCEMENT FARMING LIMITED

BALANCE SHEET

AS AT 31 MARCH 2024

	Notes	2024		2023	
		£	£	£	£
Current assets					
Debtors		3,397		7,070	
Cash at bank and in hand		24,498		36,917	
			27,895		43,987
Creditors: amounts falling due within one year	10	4,339		2,353	
Net current assets			23,555		41,634
Income funds					
Restricted funds			21,260		39,577
Unrestricted funds			2,296		2,057
			23,556		41,634

The company is entitled to the exemption from the audit requirement contained in section 477 of the Companies Act 2006, for the year ended 31 March 2024.

The directors acknowledge their responsibilities for ensuring that the charity keeps accounting records which comply with section 386 of the Act and for preparing financial statements which give a true and fair view of the state of affairs of the company as at the end of the financial year and of its incoming resources and application of resources, including its income and expenditure, for the financial year in accordance with the requirements of sections 394 and 395 and which otherwise comply with the requirements of the Companies Act 2006 relating to financial statements, so far as applicable to the company.

The members have not required the company to obtain an audit of its financial statements for the year in question in accordance with section 476. However, the accounts have been reviewed by the independent examiner and, separately and independently, compliance checked before submission to Companies House and the Charities Commission.

These financial statements have been prepared in accordance with the provisions applicable to companies subject the the small companies regime.

The financial statements were approved by the Trustees on 20th November 2024.

Mr CB Musgrave
Chair

Company Registration No. 07907437

THE MARLBOROUGH DOWNS NATURE ENHANCEMENT FARMING LIMITED

NOTES TO THE FINANCIAL STATEMENTS

AS AT 31 MARCH 2024

1 Accounting policies

Charity information

The Marlborough Downs Nature Enhancement Farming Limited is a private company limited by guarantee incorporated in England and Wales. The registered office is Arnolds Hill Farm Cottage, Arnolds Hill, Wingfield, Trowbridge, Wiltshire BA14 9LD.

1.1 Accounting convention

The financial statements have been prepared in accordance with the Marlborough Downs Nature Enhancement Farming Ltd ("the company")'s Articles of Association, the Companies Act 2006 and "Accounting and Reporting by Charities: Statement of Recommended Practice applicable to charities preparing their accounts in accordance with the Financial Reporting Standard applicable in the UK and Republic of Ireland (FRS 102)" (as amended for accounting periods commencing from 1 January 2016). The is a Public Benefit Entity as defined by FRS 102.

The company has taken advantage of the provisions in the SORP for charities applying FRS 102 Update Bulletin 1 not to prepare a Statement of Cash Flows.

The financial statements are prepared in sterling, which is the functional currency of the company. Monetary amounts in these financial statements are rounded to the nearest £.

The financial statements have been prepared under the historical cost convention, modified to include the revaluation of freehold properties and to include investment properties and certain financial instruments at fair value. The principal accounting policies adopted are set out below.

1.2 Going concern

At the time of approving the financial statements, the trustees have a reasonable expectation that the company has adequate resources to continue in operational existence for the foreseeable future. Thus the trustees continue to adopt the going concern basis of accounting in preparing the financial statements.

1.3 Charitable funds

Unrestricted funds are available for use at the discretion of the trustees in furtherance of their charitable objectives unless the funds have been designated for other purposes.

Restricted funds are subject to specific conditions by donors as to how they may be used. The purposes and uses of the restricted funds are as follows:

Restricted fund	Purposes	Uses in 2023/24
Kilcreggan Trust	Creation of nature reserve	Sowing wildflower seed; creation of woodland garden and sarsen pile; fencing
	Farmland bird project	Bird seed
Bybrook Trust	Conservation agriculture	Best practice workshops

Restricted fund	Purposes	Uses in 2023/24
Farming in Protected Landscapes	Public event programme	Community and volunteer events; forest school; outreach
Other restricted	Winter bird seed	Bird seed

1.4 Incoming resources

Income is recognised when the company is legally entitled to it after any performance conditions have been met, the amounts can be measured reliably, and it is probable that income will be received.

Cash donations are recognised on receipt. Other donations are recognised once the company has been notified of the donation, unless performance conditions require deferral of the amount. Income tax recoverable in relation to donations received under Gift Aid or deeds of covenant is recognised at the time of the donation.

Turnover is measured at the fair value of the consideration received or receivable and represents amounts receivable for goods and services provided in the normal course of business.

1.5 Resources expended

Liabilities are recognised as soon as there is a legal or constructive obligation committing the company to pay out resources.

This includes £65 for accounts examination. There are no costs for governance or trustee meetings or constitutional matters, and this year the accounts were entirely prepared in-house.

1.6 Cash and cash equivalents

Cash and cash equivalents include cash in hand, deposits held at call with banks, other short-term liquid investments with original maturities of three months or less, and bank overdrafts. Bank overdrafts are shown within borrowings in current liabilities.

1.7 Financial instruments

The company has elected to apply the provisions of Section 11 'Basic Financial Instruments' and Section 12 'Other Financial Instruments Issues' of FRS 102 to all of its financial instruments.

Financial instruments are recognised in the company's balance sheet when the company becomes party to the contractual provisions of the instrument.

Financial assets and liabilities are offset, with the net amounts presented in the financial statements, when there is a legally enforceable right to set off the recognised amounts and there is an intention to settle on a net basis or to realise the asset and settle the liability simultaneously.

Basic financial assets

Basic financial assets, which include debtors and cash and bank balances, are initially measured at transaction price including transaction costs and are subsequently carried at amortised cost using the effective interest method unless the arrangement constitutes a financing transaction, where the transaction is measured at the present value of the future receipts discounted at a market rate of interest. Financial assets classified as receivable within one year are not amortised.

Basic financial liabilities

Basic financial liabilities, including creditors and bank loans are initially recognised at transaction price unless the arrangement constitutes a financing transaction, where the debt instrument is measured at the present value of the future payments discounted at a market rate of interest. Financial liabilities classified as payable within one year are not amortised.

Debt instruments are subsequently carried at amortised cost, using the effective interest rate method.

Trade creditors are obligations to pay for goods or services that have been acquired in the ordinary course of operations from suppliers. Amounts payable are classified as current liabilities if payment is due within one year or less. If not, they are presented as non-current liabilities. Trade creditors are recognised initially at transaction price and subsequently measured at amortised cost using the effective interest method.

Derecognition of financial liabilities

Financial liabilities are derecognised when the company's contractual obligations expire or are discharged or cancelled.

2 Critical accounting estimates and judgements

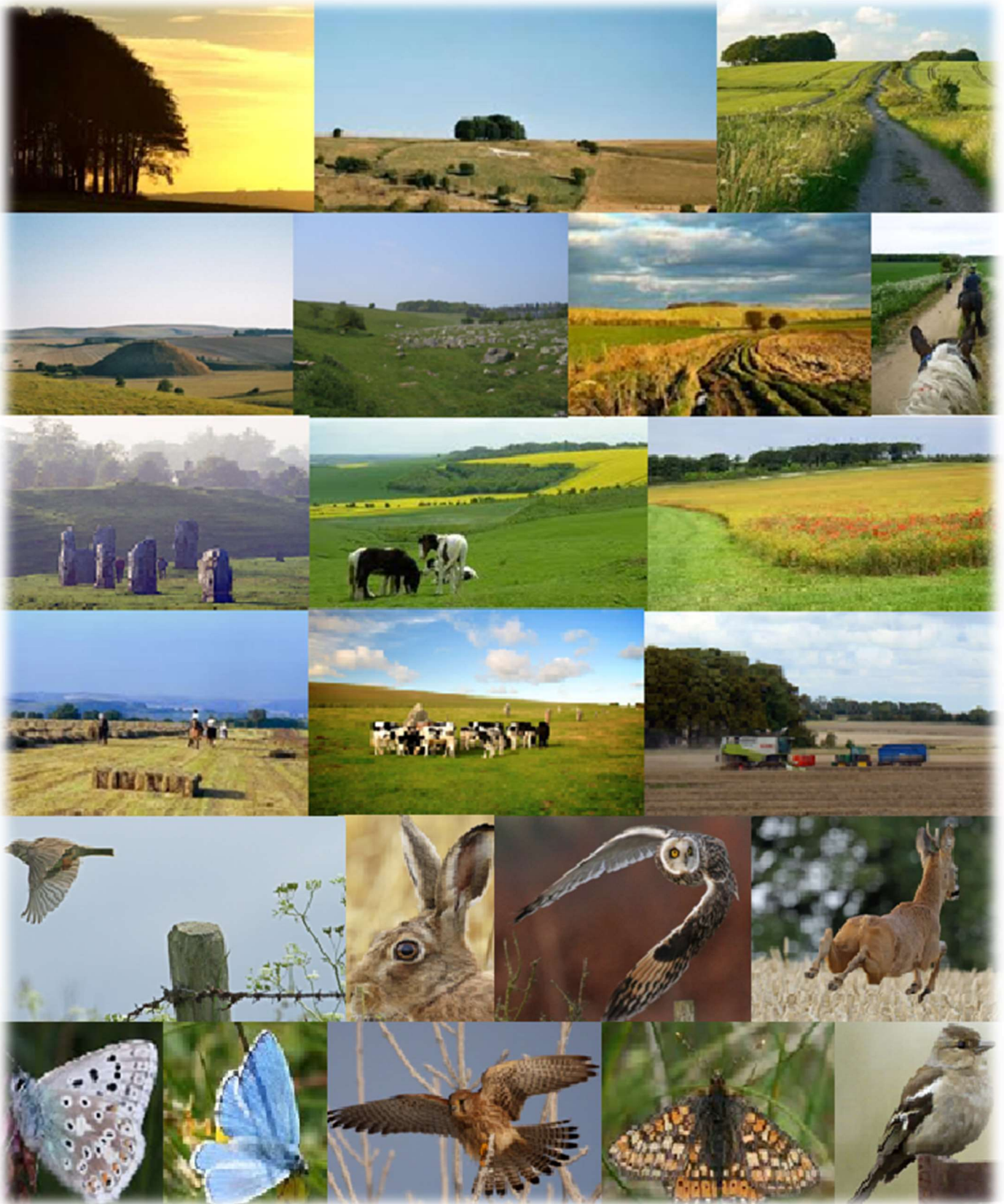
In the application of the company's accounting policies, the trustees are required to make judgements, estimates and assumptions about the carrying amount of assets and liabilities that are not readily apparent from other sources. The estimates and associated assumptions are based on historical experience and other factors that are considered to be relevant. Actual results may differ from these estimates.

The estimates and underlying assumptions are reviewed on an ongoing basis. Revisions to accounting estimates are recognised in the period in which the estimate is revised where the revision affects only that period, or in the period of the revision and future periods where the revision affects both current and future periods.

3	Donations and legacies	Unrestricted funds	Restricted funds	Total	Total
		2024	2024	2024	2023
		£	£	£	£
	Donations and gifts	5,732	2,852	8,584	5,574
		<u>5,732</u>	<u>2,852</u>	<u>8,584</u>	<u>5,574</u>
		<u><u>5,732</u></u>	<u><u>2,852</u></u>	<u><u>8,584</u></u>	<u><u>5,574</u></u>
4	Charitable activities	Charitable income		Charitable income	
		2024		2023	
		£		£	
	Sales within charitable activities	20		-	
	Grants	10,606		14,738	
	Other income	3,226		5,364	
		<u>13,852</u>		<u>20,103</u>	
		<u><u>13,852</u></u>		<u><u>20,103</u></u>	
5	Raising funds	Unrestricted funds	Restricted funds	Total	Total
		2024	2024	2024	2023
		£	£	£	£
	Fundraising costs	-	-	-	605
		<u>-</u>	<u>-</u>	<u>-</u>	<u>605</u>
		<u><u>-</u></u>	<u><u>-</u></u>	<u><u>-</u></u>	<u><u>605</u></u>

6 Charitable activities	Charitable expenditure	Charitable expenditure
	2024	2023
	£	£
Habitat creation/management	15,673	3,076
Farmland bird programme	137	-
Community events	13,970	15,347
Workshops	1,170	3,111
Access infrastructure	-	290
Outreach/promotion/printing	622	1,124
Bank charges	156	490
Insurance	377	389
Office expenses	5	93
Meeting expenses	55	69
Employee travel	459	524
	<u>32,623</u>	<u>24,514</u>
Share of governance costs (see note 7)	7,891	8,299
	<u>40,514</u>	<u>32,813</u>
Analysis by fund		
Unrestricted funds	8,739	10,898
Restricted funds	31,775	21,915
	<u>40,514</u>	<u>32,813</u>
	<u><u>40,514</u></u>	<u><u>32,813</u></u>
7 Support costs	Governance costs	Governance costs
	2024	2023
	£	£
Legal and professional	7,826	7,884
Accountancy	65	415
	<u>7,891</u>	<u>8,299</u>
	<u><u>7,891</u></u>	<u><u>8,299</u></u>
Analysis by fund		
Unrestricted funds	7,321	7,281
Restricted funds	570	1,019
	<u>7,891</u>	<u>8,299</u>
	<u><u>7,891</u></u>	<u><u>8,299</u></u>
8 Trustees		
None of the trustees (or any persons connected with them) received any remuneration or benefits from the company during the year.		
9 Employees		
There were no employees during the year.		
10 Creditors	2024	2023
Amounts falling due within one year:	£	£
Trade creditors	4,339	2,353
	<u>4,339</u>	<u>2,353</u>
	<u><u>4,339</u></u>	<u><u>2,353</u></u>

Annex 1: The Marlborough Downs Space for Nature 2023-24 Public Event Reports



Marlborough Downs Space for Nature Event Report

Event name:	Nests and Clay Eggs
Event date:	6 April 2023
Event host:	Jilly Carter, Space for Nature Reserve
Event lead:	Janinka Diverio
Attendees:	23 total (7 adults/ 16 children/ 6 no shows)
Overview:	<p>A lovely session exploring the nature reserve with three key activities. First, we made our own mini nests using found materials and talking about how a bird might make a nest and what they might look for. We discussed migrating birds returning now it's warmer here in the UK. Our second activity was making clay eggs for our nests or a flat decorated egg to hang in readiness for Easter. Clay play is always popular with young children.</p> <p>Finally, I gave the children the task of finding 12 objects to place in large egg boxes. Each object's name was written on a bunny paw print and stuck to a tree. The children had to find the paw prints then find the named object (i.e find something with 5 points, find something soft, hard, yellow, green, spiky). The children loved running around the woods exploring and were rewarded with mini chocolate eggs. They also loved the tree house and the zipwire.</p>
Feedback and evaluation:	<p>Very positive feedback. I felt the session was pitched just right for the ages we had and despite horrid weather everyone coped really well. One family left early as she had a toddler. Some no shows which was disappointing. Followed up and no response so have soft barred them for now. Will give them one more chance. The nature hunt was really good fun, and the children loved the site and activities.</p>



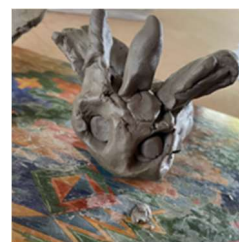
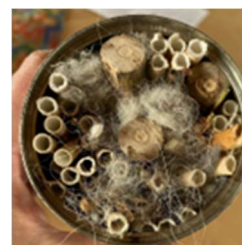
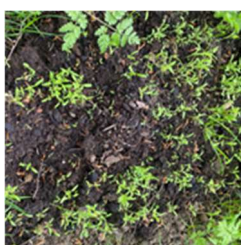
Marlborough Downs Space for Nature Event Report

Event name:	Wildlife Food Chains with the National Trust
Event date:	13 April 2023
Event host:	David White
Event lead:	Janinka Diverio and Lorretta Waters
Attendees:	21 (13 children and 8 adults/ 7 no shows)
Overview:	We offered three activities at this session and rotated them. Children enjoyed bug hunting and identifying them. We found centipedes, wood lice, worms and snails. We discussed what the farmer was growing. We walked up to the tip of the farm and discussed what plants we could see (nettles, dandelions and their properties). We talked about the tree sparrow corridor and the MDNEP work. Our main activities however were owl pellet dissection with the National Trust at Avebury. The children did this in groups of 3 or 4 whilst the others coloured in food chain paper chains and linked them together. There were lots of opportunities to chat to the families about a range of themes and Space for Nature in general.
Feedback and evaluation:	A lovely session where we were joined by the National Trust for owl pellet dissection. Alongside we made paper chain food chains where the children had to link in order who eats what and who. This triggered lots of conversation. Quite a few new families which was nice.



Marlborough Downs Space for Nature Event Report

Event name:	Exploring the Senses as a Bee
Event date:	30 th April 2023
Event host:	The Hut, Weir Farm
Event lead:	Janinka Diverio
Attendees:	Total attended 11 (6 children and 5 adults) One family of 3 children and 2 adults didn't show.
Overview:	<p>Today we explored the senses as a bee which started with a conversation around the senses and what a bee might do to utilise the senses. We played a sensory finding game and also played a game where the children wrapped sticky tape to their knees and had to go and find the flowers (bowls of polenta) and gather them with their knees (like a bee). I was very happy with how this demonstrated how bees have to travel from flower to flower to collect pollen and it was fun!</p> <p>We finally got round to making a bug and bee hotel fit for a king. I think we shall call it The Kings Hotel. Sweet morning session today at Space for Nature Wild with an underlying senses and bee theme. We made mini bee tins to hang on the trees, made clay bees and had honey and lemon to drink. We enjoyed finding old rotten sticks for our hotel and planted some bowls of wildflowers for it too.</p>
Feedback and evaluation:	<p>An enjoyable session again but in much need of new people. I think we have just had a spate of bad luck with weather, clock changes, bank holidays and hope that with brighter days ahead we can really establish this session. I'm going to try different advertising methods and would welcome some offline advertising too so will reach out to village magazines etc</p> <p>From Instagram: "That's absolutely incredible! Without a doubt the best I've ever seen. So creative. Well done and thank you from me, because we won't have life without our precious 🐝❤️" - Maizey84</p>

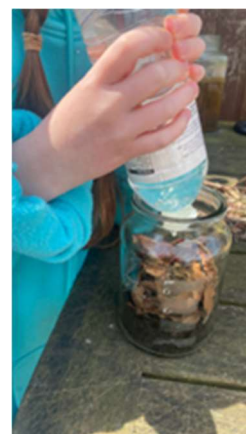
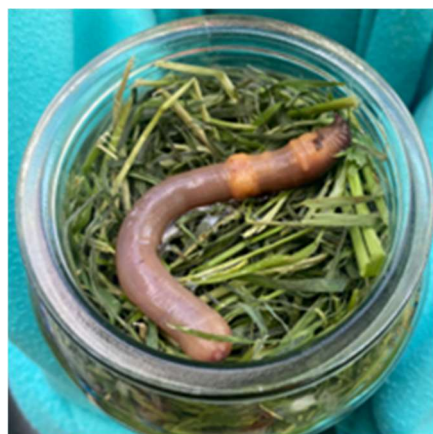


Marlborough Downs Space for Nature Event Report

Event name:	Dawn Chorus Walk
Event date:	14 th May 2023
Event host:	David White
Event lead:	Nigel Pease and Helen Llewellyn
Attendees:	20
Overview:	<p>“We had a fantastic Dawn Chorus walk on Sunday. It was misty and cold to begin with but 20 of us all delighted in spotting 40 different species (see below). We then continued after teas and coffees with croissants, to Avebury where Robin Nelson joined the group to show us his patch.” - David White</p> <p><u>BIRD LIST FOR 14th MAY Berwick Basset/Avebury Dawn Birdwatch:</u> Red Kite, Buzzard, Pheasant, Stock Dove, Woodpigeon, Collared Dove, Swift, Green Woodpecker, Great-spotted Woodpecker, Skylark, Swallow, House Martin, Yellow Wagtail, Wren, Dunnock, Robin, Blackbird, Song thrush, Common Whitethroat, Blackcap, Chiffchaff, Willow Warbler, Goldcrest, Long-tailed tit, Blue tit, Great tit, Treecreeper, Magpie, Jackdaw, Rook, Carrion crow, Starling, House sparrow, Tree sparrow, Chaffinch, Greenfinch, Goldfinch, Linnet, Yellowhammer, Corn bunting</p>
Feedback and evaluation:	<p><u>Feedback from Facebook:</u> “What a fantastic early morning adventure, many thanks to Nigel, Helen and Robin for sharing their wealth of knowledge. “Also a huge thanks to David and Diana for their hospitality, we had a wonderful morning and look forward to future events”. - Nigel Randall “Brilliant session and many thanks for the cracking opportunity and a huge thanks to David and his wife for a generous breakfast too!” - Chris Stuart</p> <p><u>Email feedback form:</u> “Brilliant session and the experts were very generous with their knowledge and time. The only thing was to add what we can do to help our birds in our gardens.” “Fabulous morning with such knowledgeable guides.”</p>
	
Photos: David White	

Marlborough Downs Space for Nature Event Report

Event name:	Pond Pottering and Worm Worth
Event date:	21 st May 2023
Event host:	The Hut, Weir Farm
Event lead:	Janinka Diverio and Richard Cripps
Attendees:	Total attended 11 (6 children and 5 adults) One family of 3 children and 2 adults didn't show.
Overview:	Richard took half the group to the pond. He waded in and got specimen trays for the children where they spotted tadpoles, water boatmen etc. The pond isn't very well developed so pond life is not rife. Meanwhile I ran a worm session where we made worm observatories and looked for worms too. We explored diagrams of their bodies and learned some fun worm facts. We then swapped and rounded up the session with marshmallows around the fire.
Feedback and evaluation:	A busy session with a lovely varied group of ages. We had 12 children and 9 adults. It's much better to have a larger group. We split the families into 2 and half did pond exploring and half did worm activities then we swapped. This worked well. Feedback that Richard was too 'talky'. The kids would have loved to have done more rather than just look and listen.



Marlborough Downs Space for Nature Event Report

Event name:	Open Farm Sunday 2023
Event date:	11 th June 2023
Event host:	Jilly Carter Maisey Farm
Event lead:	Janinka Diverio
Attendees:	418 + guests, walk ups, volunteers and workers
Overview:	<p>A wonderful day overall. The stall holders, helpers and volunteers were all fantastic.</p> <p>We held butterfly, foraging and pond walks and talks, play and natural crafts in the Nature Reserve. We had donkeys, horses, chicks, geese, an owl and sheep with shearing demos. The tractor rides took visitors around the perimeter of the arable farm and we had a straw stack for the children to climb.</p> <p>2nd Marlborough Scouts ran the cafe and Devizes Young Farmers helped with parking and had a stall doing hook a duck with a digger.</p>
Feedback and evaluation:	<p>Facebook comments:</p> <p>“We have been to lots of open farm Sundays, and this was definitely the best! Thank you to everyone involved.” Nicola Spurling</p> <p>“Thank you very much, my two children really enjoyed it” Eleanor Jane</p> <p>“We had great fun, thank you so much to all who took part and helped in making it a great day!” Sue Marie Davis</p>



Marlborough Downs Space for Nature Event Report

Event name:	Summer Farm Walk
Event date:	23 rd June 2023
Event host:	Gary and Sarah McMurray
Event lead:	Jemma Batten
Attendees:	17
Overview:	<p>A very interesting evening learning about how Govt. schemes are supporting the farm environment. We looked at several areas that provide forage and habitat for farmland birds and invertebrates including</p> <ul style="list-style-type: none">A crop that will be left unharvested specifically to provide winter seed for farmland birdsA legume fallow mix that is full of nectar-producing flowers, and also draws nitrogen down into the soilA cereal crop grown without chemicalsA plot full of wildflowers <p>We also learnt how converting arable land to unfertilised grassland is helping to reduce diffuse pollution and flooding.</p> <p>At the end of the evening we enjoyed a lively discussion over a picnic.</p>
Feedback and evaluation:	<p>“A fascinating evening learning about how a previously conventional farm has, with Defra support, been able to afford to change direction and is now farming in a more environmentally-friendly way.”</p>

Marlborough Downs Space for Nature Event Report

Event name:	Sketchbook Nature Walk with Jo Beal
Event date:	8 th July 2023
Event host:	Jilly Carter (moved from Nikki Hussey's due to bad weather)
Event lead:	Janinka Diverio with Jo Beal
Attendees:	6 (1 canceled, 1 no show)
Overview:	<p>I invited Jo Beal to run a walk and sketch activity to the tree sparrow village in Rockley. Unfortunately, on the day it was torrential rain and so I quickly called Jilly who lovingly obliged and we hot footed it over the road and up the hill to her lovely tin hut. It was disappointing to not visit the tree sparrow village, but we had a lovely time exploring the reserve and drawing the views, wild grasses and flowers and talking about the project around a big table (with a cup of tea).</p> <p>This was a lovely activity and drew people in from as far as Salisbury. I think this has been one of our events that has attracted the furthest travellers which conforms that partnership expands your reach.</p> <p>We had one cancellation due to the weather and one no show that I followed up (due to the weather).</p> <p>www.jobea.net</p>
Feedback and evaluation:	<p>This event reached 4,023 people in spite of only 6 attending. Everyone had a lovely morning, and the feedback was very positive, wanting to do more.</p> <p>I did wonder whether I should have sourced a venue with a wet weather option, but I concluded I did the right thing and that we should take risks. With James', Jilly's and Vicki's close by I knew we would have an escape route.</p>

Marlborough Downs Space for Nature Event Report

Event name:	Design a Nature Trail
Event date:	8 th August 2023
Event host:	Barbury Castle Estate
Event lead:	Janinka Diverio
Attendees:	27 (18 children, 9 adults and one cancellation on the day)
Overview:	<p>What a lovely morning we had at Barbury Castle Estate. The lucky families were treated to puppy, baby turkey and chicken viewings as well as seeing the horses come back and forth from their daily walks.</p> <p>Once we'd said hello to all the animals we set off on our walk to the pond and with our nature notebooks, compasses and binoculars enjoyed a nature amble taking notes of observations en route. We saw two giant puff balls and found two small skulls too. Someone even spotted a wild sloe bush.</p> <p>Throughout the walk we kept a watch on where North was which was lots of fun using the compasses. On returning we set about drawing our maps and nature trails in the barn and said hello to the sheepdogs at the end.</p> <p>Thanks so much to Simon, Gary and Clive at Sharpridge Yard for being so accommodating and letting us see behind the scenes.</p>
Feedback and evaluation:	<p>Feedback was great and a lot of children were accompanied by very appreciative grandparents who were also able to impart their knowledge. Everyone took part in all aspects of the activities.</p> <p>My first event at this estate and it went really smoothly. An in depth recce facilitated this and contributed to my knowledge.</p> <p>Really successful and will definitely repeat this theme.</p> <p><u>From the feedback form:</u></p> <p>"A really relaxed morning, not too structured, really lovely!"</p> <p>"Loved that it was relaxed and not too structured, the children were able to explore and learn but very much child directed. Lovely event!"</p> <p>"Really like how well communicated the directions etc are and what we need to bring. Also love that it is so relaxed and nobody is forced to join in or do any activity they don't want to. Lovely to be able to see parts of Marlborough Downs that we wouldn't otherwise go to. Thank you!"</p> <p>"Really appreciate that it was a free event. We learnt to use a compass and were leant binoculars. Unfortunately few birds around because of wet weather, nor were there any damselflies etc at the dew pond. Children had plenty of time to look for things on the walk e.g. giant puffballs, bones under the trees and beehive (again few bees about as too damp). Saw chicks and puppies in barn. Designing a trail was demanding for some in the age group - my 5 yr old just drew a few things but that didn't matter. Leader was enthusiastic and we enjoyed seeing the racing horses in their stables.</p> <p>Advance warning to bring folding chairs and waterproof blanket to sit on was very helpful."</p>

Marlborough Downs Space for Nature Event Report



Marlborough Downs Space for Nature Event Report

Event name:	Pond Exploring
Event date:	15 th August 2023
Event host:	Fiddlers Hill
Event lead:	Richard Cripps and Janinka Diverio
Attendees:	13 (7 children, 6 adults and one no show family on the day)
Overview:	<p>What an adorable session we had pond dipping at Broad Hinton under the Hackpen white horse. First of all, we met Tracey the Turkey then we headed round to the pond for some lovely plant talks and pond walks with expert Richard Cripps.</p> <p>As we were walking we made weeping willow crowns and played with leaf swords.</p> <p>A slide down the edge into the shallow waters we were able to scoop up trays of pond life! We found water boatmen, leeches and a very sweet newt!</p> <p>Alongside we made critter wings and emulated the water creatures and fauna in clay.</p> <p>Richard seemed to understand the children more this time. Getting into the edges of the pond with them and tailoring some of the knowledge so it was more reachable for them.</p>
Feedback and evaluation:	“Both the children and the accompanying adult enjoyed the experience and are looking forward to their next event, always 'a positive' when it comes to little children.” - Gerald Long



Marlborough Downs Space for Nature Event Report

Event name:	Transient Art
Event date:	22 nd August 2023
Event host:	The Reserve, Rockley
Event lead:	Janinka Diverio
Attendees:	21 (11 children, 10 adults and one no show family on the day)
Overview:	<p>My favourite session so far. We had a lovely morning in the woods at Rockley. The theme was temporary art, and the children loved creating patterns with leaves, twigs, wheat, other fauna and a few old bouquet petals I had at home as well as flour. We explored the site looking for natural materials to use and found flint, wheat, pinecones, thistles and an array of greenery. The children designed patterns and using their imagination pictures of rabbits, a leopard and faces.</p> <p>We then enjoyed visiting our art gallery and admiring each other's work. To end we created two floating willow circles for the pond and discussed whether they would float or sink.</p> <p>Inspired by Andy Goldsworthy we enjoyed exploring textures, colour, patterns and even made a burial mound for a rabbit we found who had died.</p>
Feedback and evaluation:	<p>I was really pleased with all aspects of this event which I had given a lot of thought to. I realise it isn't a typical "in nature" activity but sometimes that's the best way to engage children as reiterated by the lovely comment below.</p> <p>"Not many of the children had considered making art from nature and I believe this idea challenged their creative abilities and directed their attention to trees, grasses and a variety of plants both growing and dying. Once the children got going, they became totally absorbed with the task and a diverse selection of art was created in lovely surroundings. The swings, zip wire and climbing items provided a pleasant diversion giving the children a break from the focused activity - all out in the fresh air. It could not have been better! Thank you" - Glynis Long</p>



Marlborough Downs Space for Nature Event Report

Event name:	Avebury Bat Walk
Event date:	8 th September 2023
Event host:	Avebury National Trust
Event lead:	Ali Rasey (WC) and Lorretta Waters (NT)
Attendees:	27 (5 no shows)
Overview:	Thanks to everyone who attended the SfN bat walk at Avebury on Friday, kindly hosted by Lorretta and the National Trust. A lovely warm evening, as darkness fell the stars of the night were of course the bats; noctule bats who came out early and could easily be seen flying high in the sky and heard on our bat detectors 'chip-chopping' as they ducked and dived to catch their supper. Then in front of the Manor were the serotines, loud as anything and putting on a fabulous display as they swooped in front of us. Then the agile little pipistrelles – our smallest UK bat working hard to catch their 3,000-midge supper. It was a fun evening, and we hope everyone enjoyed it!
Feedback and evaluation:	"Brilliant event. Thank you." Julia Haskell via Facebook



Marlborough Downs Space for Nature Event Report

Event name:	Night Safaris
Event date:	16 th , 18 th & 20 th October 2023
Event host:	Locations: East Farm, Manor Farm. Avebury Trusloe, Maisey Farm
Event lead:	Matt Prior
Attendees:	12
Overview:	Matt Prior escorted 3 small groups on a late evening safari across farmland to capture and ring birds.
Feedback and evaluation:	<p>The events were very well received. Quite a lot of juggling and rearranging due to a period of horrendous weather and flooding bi everyone involved wanted to make it work.</p> <p>Matt and Co. ringed:</p> <p>Night 1: 12 Skylark and a Stock Dove. We saw field mouse, a bat, hedgehog, badger, hares and a Barn Owl</p> <p>Night 2: 10 Skylarks, saw lots of hares, mice and deer. Very close view of a gorgeous leveret</p> <p>Night 3: Skylarks, Grey partridges, a corn bunting and a fieldfare</p> <p>“Just wanted to say what a FANTASTIC time we had on Monday's Night Safari! Many would think we were bonkers to still be up on the Downs at midnight in October, but we were in our element, and Matt's enthusiasm is so infectious! The whole experience felt like a real privilege and we will treasure our memories and photos for years to come. Many thanks for your wonderful organisation (and for letting the girls come - they absolutely loved it!)” - Andie Bright & family</p> <p>“Last evening I went bird ringing. It was a m a z i n g !!!!! We caught skylarks and grey partridge and a corn bunting and a fieldfare. Weight and measurements taken and rings fitted. Thank you to Matt Prior for being so skilled, knowledgeable and good fun.” - Emma Lane</p>



Marlborough Downs Space for Nature Event Report

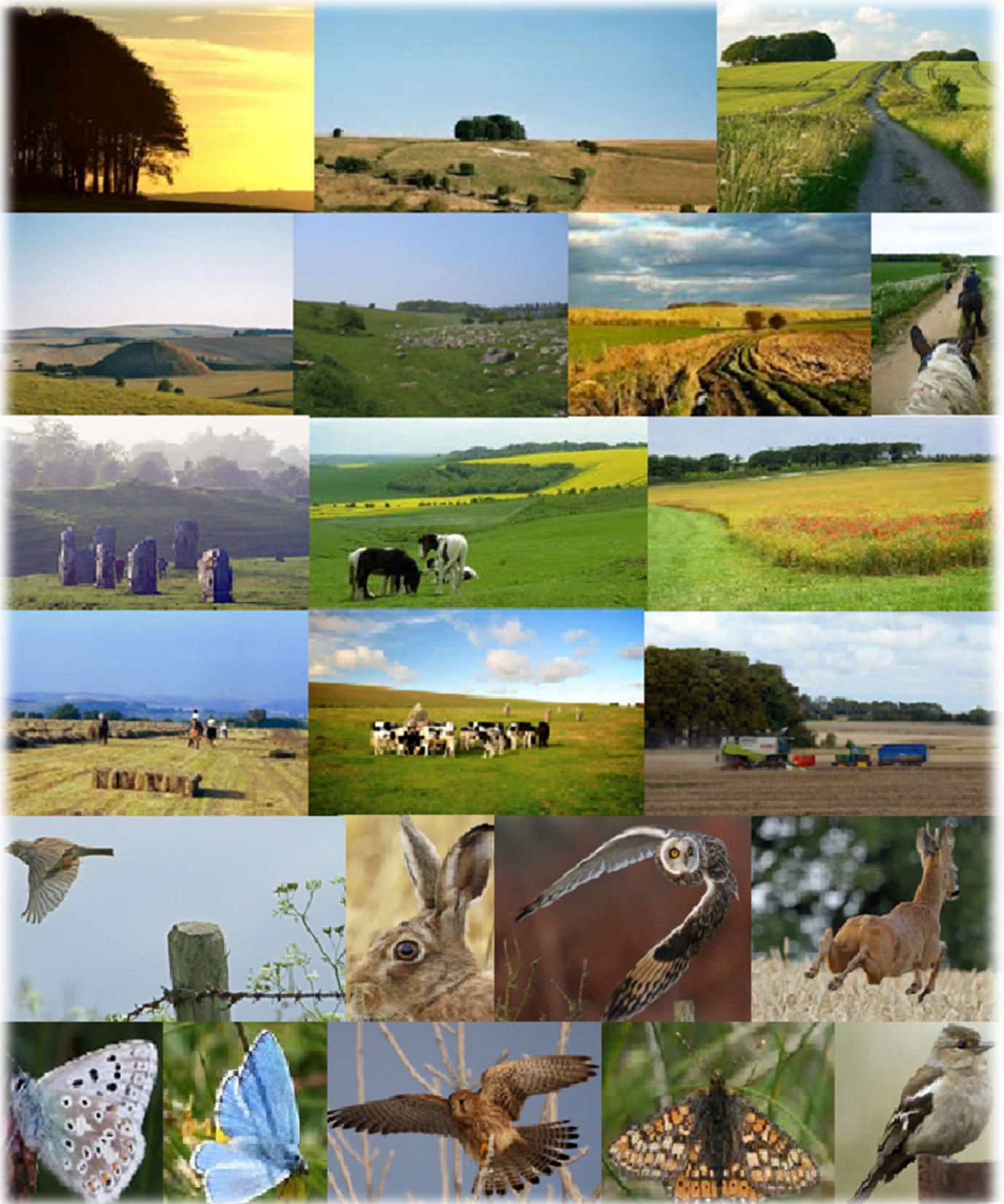
Event name:	Hibernation and Migration
Event date:	24 October 2023
Event host:	The Reserve
Event lead:	Jemma Batten and Janinka Diverio
Attendees:	13 children 8 adults (2 no show)
Overview:	<p>What a gorgeous time we had in the half term autumn sun learning about which animals hibernate and which animals migrate delivered by Jemma Batten. We reinforced this message by making cute conker spider webs and cardboard bat wings which the children loved decorating.</p> <p>We had a little tour around the reserve looking for mini beasts and Jemma explained a little about how and where bats might sleep for the winter. The children and adults loved it and the message really sunk in. It's so great that we are raising children with a passion and thirst for nature and its wonderful secrets. We also found a near perfect decomposed hare.</p>
Feedback and evaluation:	<p>Feedback was very positive. The setting and sunshine always helps but the quality of the content and the activities are really strong. Parents were really happy and impressed.</p> <p>This is the second time we have run this topic and it was nice to focus on other wildlife this year. The children seemed to really grasp the facts and I think it was pitched perfectly.</p> <p>“It was a brilliant day for my four grandchildren. Lovely staff. Amazing place. So much to do. Beautifully organised.”</p> <p>“Well put together session, very informative and interational. We had a great time.”</p>



Marlborough Downs Space for Nature Event Report

Event name:	Saturday Farm Walk
Event date:	16 March 2024
Event host:	Jilly Carter
Event lead:	Jilly Carter
Attendees:	15
Overview:	<p>We had a really lovely time; the sun came out and the wind dropped and everyone turned up (no dogs though which was odd!)</p> <p>Henry Hitchcock (Weir Farm) came along and gave us a very interesting talk about the Stewardship arable options and ploughing vs direct drilling on our chalk with the clay cap. We went to see the owl box, the ponds, the bird feeders, the graves, and we even saw the lapwings which was magical.</p> <p>And then right at the end the older lady on her own said we had cleared up a 50-year-old mystery.... way back in 1974/75 when she was looking for a house in the area, she met a woman who told her she had buried three husbands on top of the Downs, and today she saw those very graves and discovered she must have met Nora Laye (who died in 1976). Weird and incredible that for 50 years she never forgot what an old woman had told her.</p>
Feedback and evaluation:	<p>From participants:</p> <p>“How lovely to get a chance to see first-hand what interesting things are happening on the Downs!”</p> <p>“Really enjoyed Saturday’s Walk, keep up the good work!”</p>

Annex 2: The Marlborough Downs Space for Nature 2024-27 Smart Goals



AIM:	PARTNERSHIP WORKING	
Specific goals	To extend and increase engagement and knowledge/time/finance from partnerships	Work with accredited organisations who can quantify our environmental goals
Measurement	How many new partners can we work with? Needs to be a two-way process	Environmental gain
Actions	Identify partners <ul style="list-style-type: none"> • Environmental • Financial 	Baseline Follow-up surveys / measurements Monitoring
Relevance	Landscape scale delivery of environmental gain Funding opportunities	Wildlife and habitats, pollinators, soil health (carbon), connectivity, water quality
Timeline	Year 1 Identify Year 2 Interact Years 3-5 Implement	Baseline surveys to be carried out in first three years Follow-up as appropriate
People	Delivery group	Carbon footprint partner

AIM:	LANDSCAPE-SCALE ENVIRONMENTAL PLANNING AND DELIVERY	
Specific goals	Increase amount of bramble across the landscape, especially along linear features (eg Ridgeway)	Encourage members to deliver environmental actions through SFI / CS agreements
Measurement	75% of farms to commit to planting and/or managing bramble patches	95% of group in SFI
Actions	Training workshop to explain why and how Farmers to commit and plant/manage	Training workshops on what's available, how to apply, how to deliver
Relevance	<p>Good habitat for pollinators</p> <p>Shelter, nesting and foraging habitat for wide variety of wildlife species</p> <p>Landscape connectivity</p> <p>Community event - planting/education</p>	<p>Wildlife and habitats</p> <p>Air and water quality</p> <p>Landscape connectivity</p> <p>Historic environment</p> <p>Pollinators</p> <p>Community</p> <p>Soil health</p>
Timeline	Three years	By the end of the first year
People	Farmers and volunteers	Farmers

AIM:	LANDSCAPE-SCALE ENVIRONMENTAL PLANNING AND DELIVERY	
Specific goals	Double drilling for corn bunting	Replace dead elms (and ash?) with disease resistant species
Measurement	Two 6m wide strips per farm	X number planted per farm
Actions	Campaign Demonstration Walk and talk Count singing males and report	Research (and grants) Training Source plants and sundries Planting and maintenance
Relevance	Wildlife and habitats Landscape connectivity	Pollinators Wildlife and habitats (planting) Landscape connectivity Air quality (carbon) Community
Timeline	Year 1 - 25% of members Year 2 - 50% of members Year 3 - 75% of members	
People	Farmers and volunteer surveyors	Farmers and volunteers

AIM:	COMMUNITY EVENTS AND OUTREACH	
Specific goals	Recruit a new event co-ordinator	Engage with local schools
Measurement	No. of people No. of events No. of visits	Five local school visits
Actions	Work with LEAF/FWAG/schools Approach local schools Funding	Transport Programme Connect with FWAG/LEAF/local schools (and further afield) Investigate transport options (community buses?)
Relevance	Showcase MDNEP achievements Connect people with countryside/nature	Showcase MDNEP achievements Connect children with countryside/nature
Timeline	Plan programme	Dependent upon recruiting co-ordinator
People	Is there anyone in the group who could run the programme?	Fiona Norse

AIM:	COMMUNITY EVENTS AND OUTREACH	
Specific goal	Build public support for farmers and farming	
Measurement	No. people attending How many people engage online, other ways	Engage with local politicians/council, etc. All age groups
Actions	Open Farm Sunday Find funding for co-ordinator Find funding for trailer	Make good use of the Reserve Engage with schools, parish magazines, QR codes on the Downs
Relevance	Long term Perception that farming is good / beneficial, and that Marlborough Downs are worth protecting	
Timeline	2024	
People	David White - trailer	

Aim:	LINKS WITH OTHER FARMER GROUPS
Specific goal	<p>Learnings from: Different skill sets, different contacts.</p> <p>Learnings to: Different landscapes, sharing cost base. e.g. sharing Janinka with local groups; opening up existing events to other groups e.g Farm walk.</p>
Measurement	One visit out /one visit in per annum.
Actions	Go and see the recently awarded Landscape Recovery II projects at Durdle Door/the Brit Group /Luppitt Group
Relevance	Farmers working together on the most up to date Government Landscape scheme worth £.75M/Group. Would we want to consider this?
Timeline	<p>Year one – visit another local group</p> <p>Year one – invite local groups to Summer Farm Walk</p> <p>Year two – visit a group further afield, with overnight stay</p>
People	Identify members who have or are willing to make contacts in other groups

AIM:	REPRESENTATION / ADVOCACY	
Specific goals	Promote Marlborough Downs and our work to a wide audience via social media	Respected, broader, louder voice <ul style="list-style-type: none"> • Help our farmers • Help our wildlife
Measurement	Quarterly engagement reports, eg Facebook insights	Members report on progress they have experienced
Actions	Allocate budget for boosting fb posts Increase number of admins who can post to fb Investigate Instagram Members to send content to admins via WhatsApp	Case study for eg OFC, farming press Remind other organisations we are at the coalface
Relevance	Community engagement and outreach	Promote farming as a good thing Generate funding for projects Promote the work of the group
Timeline	Ongoing	Ongoing
People	David White to co-ordinate	Trustees